



**2022**

# **KAMET STEEL SECTIONS**



Today, Metinvest is much more than a company that sells iron ore and steel products. A unique formula made up of various ingredients helps Metinvest to be a reliable strategic partner.

We manufacture our products in Ukraine, the EU, the UK and the US. This gives us the opportunity to take an individual approach to each customer's needs in terms of product mix, batch size and delivery time.

The bespoke solutions that we offer differentiate us as a partner who helps to develop our customers' businesses.

## TOP 10

iron ore producers  
in the world

## 44.9 MT

iron ore  
concentrate  
produced

## 7,200

customers

## TOP 45

steel producers  
in the world

## 13.4 MT

crude steel  
produced

## 1,000+

steel products

# CONTENT

CONTINUOUSLY CASTED BILLET	4
HOT-ROLLED BILLET	5
HOT-ROLLED PIPE BILLET	6
REBAR	7
CHANNELS	7
ANGLES	8
WIRE ROD	12
ROUND BAR	14
ROUND FOR GRINDING BALLS PRODUCTION	16
GRINDING BALLS	16
GRINDING ROD	16
CONTACTS	18

## CONTINUOUSLY CASTED BILLET

Size, mm		Standard for dimensions and shape	Steel grades	Standard for steel grade	Standard for technical requirements
Cross-section	Length				
130x130	6000; 12000	TU U 24.1-31632138-1416:2019			TU U 24.1-31632138-1416:2019
150x150	6000; 12000				
160x160	6000; 12000				
200x200	6000; 12000				
130x130	6000; 12000	TT 230-31-2017	St1-5 kp/ps/sp	DSTU 2651:2005 / GOST 380-2005	TT 230-31-2017
150x150	6000; 12000		20, 35, 45	DSTU 7809:20115, GOST 1050-2013	
160x160	6000; 12000		09G2S	DSTU 8541:2015	
200x200	6000; 12000		SAE 1006-SAE1020	ASTM A1040-17	
130x130	6000; 12000	TT 230-32-2017	SAE 1070-SAE1080	ASTM A1040-17	TT 230-32-2017
150x150	6000; 12000		S235, S275, S355 (JR, JO, J2)	EN 10025-2:2019	
160x160	6000; 12000		C72D2	EN 16120-2,4:2011	
200x200	6000; 12000		Gr60, Gr60 (3/4), Gr60 (5/8), Gr60 (9/11)	ASTM A615/A615M-09	
130x130	6000; 12000	TT 230-36-2017	CQ2A, CQ2B, CQ2E, CQ2F	Client's technical requirements	TT 230-36-2017
150x150	6000; 12000		10880	Client's technical requirements	
160x160	6000; 12000		1535-1 IMP, 1535-1/2 IMP	Client's technical requirements	
200x200	6000; 12000		Grade500	Client's technical requirements	
130x130	8000; 12000	TT 230-37-2019	Gr1022	Client's technical requirements	TT 230-37-2019
150x150	8000; 12000		Q195, Q255	Client's technical requirements	
160x160	8000; 12000				
200x200	8000; 12000				
130x130	6000; 12000	TT 230-38-2019			TT 230-38-2019
150x150	6000; 12000				
335x400	3700 - 7900	TU U 24.1-31632138-1416:2019	St1-5 kp/ps/sp 20, 35, 45 09G2S Sv-08G2S 20H-40H 70G 16D SAE 1006-SAE1020 SAE 1070-SAE1080 S235, S275, S355 (JR, JO, J2) C72D2, C80D2	DSTU 2651:2005 / GOST 380-2005 DSTU 7809:20115, GOST 1050-2013 DSTU 8541:2015 TU U 24.1-23365425-710:2019 DSTU 7806:2015, GOST 4543-2016 DSTU 8429:2015 DSTU 8817:2018 ASTM A1040-17 ASTM A1040-17 EN 10025-2:2019 EN 16120-2,4:2011	TU U 24.1-31632138-1416:2019

Dimensions, steel grade and technical requirements should be agreed during the conclusion of contract. By agreement it is possible to manufacture products of other sizes and steel grades.

## HOT-ROLLED BILLET

Size, mm		Standard for dimensions and shape	Steel grades	Standard for steel grade	Standard for technical requirements
Cross-section	Length				
125x125	2000 - 12000	TU U 24.1-31632138-1415:2019	St1-5 kp/ps/sp 20, 35, 45 09G2S 40H 16D S235, S275, S355 (JR, JO, J2)	DSTU 2651:2005 / GOST 380-2005 DSTU 7809:20115, GOST 1050-2013 DSTU 8541:2015 DSTU 7806:2015, GOST 4543-2016 DSTU 8817:2018, GOST 6713-91 EN 10025-2:2019	TU U 24.1-31632138-1415:2019
130x130	2000 - 12000				
150x150	2000 - 12000				
160x160	2000 - 12000				
170x170	2000 - 12000				
180x180	2000 - 12000				
190x190	2000 - 12000				
200x200	2000 - 12000				
250x250	2000 - 12000				
300x300	2000 - 12000				
320x320	3500 - 7500				
210x280	1800 - 6000	TU U 14-2-1251-2000	St3ps/sp 09G2S	DSTU 2651:2005 / GOST 380-2005 DSTU 8541:2015	TU U 14-2-1251-2000

Dimensions, steel grade and technical requirements should be agreed during the conclusion of contract. By agreement it is possible to manufacture products of other sizes and steel grades.

Size, mm		Standard for dimensions and shape	Steel grades	Standard for steel grade	Standard for technical requirements
Diameter	Length				
120	1800 - 12000	GSTU 3-009-2000	20, 35, 45 20 09G2S 40H Dtr; St37.3; St52.3; S355J2H; K55 S355J2 LF2 C45, C45R	DSTU 7809:20115, GOST 1050-2013 TU U 24.1-05757883-218:2019 DSTU 8541:2015 DSTU 7806:2015, GOST 4543-2016 GSTU 3-009-2000 EN 10025-2:2019 ASTM A350/A350M -15 EN 10083-2:2006	GSTU 3-009-2000
130	1800 - 12000				
140	1800 - 12000				
150	1800 - 12000				
160	1800 - 12000				
170	1800 - 12000				
180	1800 - 12000				
190	1800 - 12000				
200	1800 - 12000				
210	1800 - 12000				
220	1800 - 12000				
230	1800 - 12000				
240	1800 - 12000				
250	1800 - 12000				
260	1800 - 12000				
270	1800 - 12000				
280	1800 - 12000				
290	1800 - 11300				
300	1800 - 10500				

Dimensions, steel grade and technical requirements should be agreed during the conclusion of contract. By agreement it is possible to manufacture products of other sizes and steel grades.

Product	Sizes, mm		Weight, kg/m (for nominal diameter)	Standard for dimensions and shape	Strength class	Standard for steel grade	Standard for technical requirements		
	Nominal diameter, mm	Length							
Reinforcing steel with smooth surface	25	6000 - 12000	3,850	DSTU 4738:2007 / GOST 2590-2006 (EN 10060:2003, NEQ; GOST 2590-2006, IDT)	A240C	DSTU 3760:2019	DSTU 3760:2019		
		6000 - 12000							
Reinforcing steel with ribbed surface	20	6000 - 12000	2,470	DSTU 3760:2019	A400C A500C	DSTU 3760:2019	DSTU 3760:2019		
		8						6000 - 12000	0,395
		10						6000 - 12000	0,617
		12						6000 - 12000	0,888
		14						6000 - 12000	1,210
		16						6000 - 12000	1,580
		18						6000 - 12000	2,000
		22						6000 - 12000	2,980
		25						6000 - 12000	3,850
		28						6000 - 12000	4,830
32	6000 - 12000	6,310							

Dimensions, steel grade and technical requirements should be agreed during the conclusion of contract. By agreement it is possible to manufacture products of other sizes and steel grades.

Designation	Size, mm				Standard for dimensions and shape	Steel grades	Standard for steel grade	Standard for technical requirements
	Height	Width	Thickness	Length				
5U	50	32	4,4	4000 - 12000	DSTU 3436-96 (GOST 8240-97)	St0, St3ps/sp	DSTU 2651:2005 / GOST 380-2005	DSTU 4484:2005 / GOST 535-2005
6,5U	65	36	4,4	4000 - 12000		09G2S	DSTU 8541:2015	DSTU 8541:2015
8U	80	40	4,5	4000 - 12000		S235, S275, S355 (JR, JO, J2)	EN 10025-2:2019	EN 10025-1:2004; EN 10025-2:2019
10U	100	46	4,5	4000 - 12000				
U50x25	50	25	5	4000 - 12000	DIN 1026-1:2009	S235JR, S235J0, S235J2	EN 10025-2:2019	EN 10025-1:2004; EN 10025-2:2019
U60	60	30	6	4000 - 12000		S275JR, S275J0, S275J2		
U65	65	42	5,5	4000 - 12000				
U80	80	45	6	4000 - 12000	EN 10279:2000	S355JR, S355J0, S355J2		DSTU 4484:2005 / GOST 535-2005
U100	100	50	6	4000 - 12000				

Dimensions, steel grade and technical requirements should be agreed during the conclusion of contract. By agreement it is possible to manufacture products of other sizes and steel grades.

Size, mm			Standard for dimensions and shape	Steel grades	Standard for steel grade	Standard for technical requirements
Widths	Thickness	Length				
25x25	3	4000 - 12000	DSTU 2251:2018	St0, St3ps/sp	DSTU 2651:2005 / GOST 380-2005	DSTU 4484:2005 / GOST 535-2005
25x25	4	4000 - 12000				
30x30	3	4000 - 12000				
30x30	4	4000 - 12000				
35x35	3	4000 - 12000				
35x35	4	4000 - 12000				
35x35	5	4000 - 12000				
40x40	3	4000 - 12000				
40x40	4	4000 - 12000				
40x40	5	4000 - 12000				
45x45	3	4000 - 12000				
45x45	4	4000 - 12000				
45x45	5	4000 - 12000				
50x50	3	4000 - 12000				
50x50	4	4000 - 12000				
50x50	5	4000 - 12000				
50x50	6	4000 - 12000				
63x63	4	4000 - 12000				
63x63	5	4000 - 12000				
63x63	6	4000 - 12000				
70x70	4,5	4000 - 12000				
70x70	5	4000 - 12000				
70x70	6	4000 - 12000				
70x70	7	4000 - 12000				
70x70	8	4000 - 12000				
75x75	5	4000 - 12000				
75x75	6	4000 - 12000				
75x75	7	4000 - 12000				
75x75	8	4000 - 12000				
75x75	9	4000 - 12000				
80x80	5,5	4000 - 12000				
80x80	6	4000 - 12000				
80x80	7	4000 - 12000				
80x80	8	4000 - 12000				
90x90	6	4000 - 12000				
90x90	7	4000 - 12000				
90x90	8	4000 - 12000				
90x90	9	4000 - 12000				
100x100	6,5	4000 - 12000				
100x100	7	4000 - 12000				
100x100	8	4000 - 12000				
100x100	10	4000 - 12000				
100x100	12	4000 - 12000				
				S235, S275, S355 (JR, JO, J2)	EN 10025-2:2019	EN 10025-1:2004; EN 10025-2:2019



Size, mm			Standard for dimensions and shape	Steel grades	Standard for steel grade	Standard for technical requirements	
Widths	Thickness	Length					
25x25	3	4000 - 12000	EN 10056-1:2017 EN 10056-2:1993	S235JR, S235JO, S235J2	EN 10025-2:2019	EN 10025-1:2004; EN 10025-2:2019	
25x25	4	4000 - 12000					
25x25	5	4000 - 12000					
30x30	3	4000 - 12000					
30x30	4	4000 - 12000					
30x30	5	4000 - 12000					
35x35	3	4000 - 12000					
35x35	4	4000 - 12000					
35x35	5	4000 - 12000					
40x40	3	4000 - 12000					
40x40	4	4000 - 12000					
40x40	5	4000 - 12000					
45x45	3	4000 - 12000					
45x45	4	4000 - 12000					
45x45	5	4000 - 12000					
50x50	3	4000 - 12000					
50x50	4	4000 - 12000					
50x50	5	4000 - 12000					
50x50	6	4000 - 12000					
50x50	7	4000 - 12000					
60x60	5	4000 - 12000					
60x60	6	4000 - 12000					
60x60	8	4000 - 12000					
63x63	5	4000 - 12000					
63x63	6	4000 - 12000					
65x65	5	4000 - 12000					
					S275JR, S275JO, S275J2		
					S355JR, S355JO, S355J2		DSTU 4484:2005 / GOST 535-2005



## ANGLES

Widths	Size, mm		Standard for dimensions and shape	Steel grades	Standard for steel grade	Standard for technical requirements
	Thickness	Length				
65x65	6	4000 - 12000	EN 10056-1:2017  EN 10056-2:1993	S235JR, S235JO, S235J2  S275JR, S275JO, S275J2  S355JR, S355JO, S355J2	EN 10025-2:2019	EN 10025-1:2004; EN 10025-2:2019  DSTU 4484:2005/ GOST 535-2005
65x65	7	4000 - 12000				
70x70	5	4000 - 12000				
70x70	6	4000 - 12000				
70x70	7	4000 - 12000				
70x70	8	4000 - 12000				
70x70	9	4000 - 12000				
75x75	5	4000 - 12000				
75x75	6	4000 - 12000				
75x75	7	4000 - 12000				
75x75	8	4000 - 12000				
75x75	9	4000 - 12000				
80x80	6	4000 - 12000				
80x80	7	4000 - 12000				
80x80	8	4000 - 12000				
80x80	9	4000 - 12000				
80x80	10	4000 - 12000				
90x90	6	4000 - 12000				
90x90	7	4000 - 12000				
90x90	8	4000 - 12000				
90x90	9	4000 - 12000				
100x100	6	4000 - 12000				
100x100	7	4000 - 12000				
100x100	8	4000 - 12000				
100x100	10	4000 - 12000				
100x100	12	4000 - 12000				

Dimensions, steel grade and technical requirements should be agreed during the conclusion of contract. By agreement it is possible to manufacture products of other sizes and steel grades.



Product	Nominal diameter, mm	Weight, kg/m (for nominal diameter)	Standard for dimensions and shape	Steel grades	Standard for steel grade	Standard for technical requirements
Carbon steel wire rod of commercial quality	5,5	0,187	DSTU 4738:2007/ GOST 2590-2006 (EN 10060:2003, NEQ; GOST 2590-2006, IDT)	St0, St1kp/ps/sp St3kp/ps/sp	DSTU 2651:2005 / GOST 380-2005	DSTU 2770-94 (GOST 30136-95) (ISO 8457/1-89)
	6	0,222				
	6,5	0,261				
	7	0,302				
	8	0,396				
	8,5	0,445				
	9	0,499				
	10	0,617				
	11	0,746				
	11,5	0,815				
	12	0,888				
	13	1,042				
	13,5	1,124				
	14	1,208				
15	1,387					
16	1,578					
Wire rod for ropes production	5,5	0,187	DSTU 4738:2007/ GOST 2590-2006 (EN 10060:2003, NEQ; GOST 2590-2006, IDT)	70, 80	DSTU 3683-98	DSTU 3683-98
	6	0,222				
	6,5	0,261				
	8	0,396				
	9	0,499				
	10	0,617				
	11	0,746				
	11,5	0,815				
12	0,888					
Spring steel wire rod	5,5	0,187	DSTU 4738:2007/ GOST 2590-2006 (EN 10060:2003, NEQ; GOST 2590-2006, IDT)	70	DSTU 8429:2015	DSTU 8429:2015
	6	0,222				
	6,5	0,261				



Product	Nominal diameter, mm	Weight, kg/m (for nominal diameter)	Standard for dimensions and shape	Steel grades	Standard for steel grade	Standard for technical requirements
Carbon steel wire rod	5,5	0,187	ASTM A510/A510M-08 ASTM A510/A510M-13 ASTM A510/A510M-18 ASTM A510/A510M-20	SAE1005, SAE1006, SAE1008, SAE1010, SAE1012, SAE1015, SAE1017, SAE1018, SAE1020, SAE1022, SAE1080	ASTM A1040-17	ASTM A510/ A510M-08  ASTM A510/ A510M-13  ASTM A510/ A510M-18  ASTM A510/ A510M-20
	6	0,222				
	6,5	0,261				
	7	0,302				
	8	0,396				
	8,5	0,445				
	9	0,499				
	10	0,617				
	11	0,746				
	11,5	0,815				
	12	0,888				
	13	1,042				
	13,5	1,124				
	14	1,208				
	15	1,387				
	16	1,578				
Non-alloyed steel wire rod	5,5	0,187	DSTU 4738:2007/ GOST 2590-2006 (EN 10060:2003, NEQ; GOST 2590-2006, IDT)	C72D2, C80D2	ISO 16120-4:2011	ISO 16120-4:2011
	6	0,222				
	6,5	0,260				
	8	0,396				
	9	0,499				
	10	0,617				
	11	0,746				
	11,5	0,815				
12	0,888					
Wire rod for welding	5,5	0,187	DSTU 4738:2007/ GOST 2590-2006 (EN 10060:2003, NEQ; GOST 2590-2006, IDT)	Sv-08, Sv-08Г2C	TU U 24.1- 23365425- 710:2019	TU U 24.1- 23365425- 710:2019
	6	0,222				
	6,5	0,261				

Dimensions, steel grade and technical requirements should be agreed during the conclusion of contract. By agreement it is possible to manufacture products of other sizes and steel grades.

## ROUND BAR

Size, mm		Standard for dimensions and shape	Steel grades	Standard for steel grade	Standard for technical requirements	
Diameter	Length					
25	6000 - 12000	DSTU 4738:2007/GOST 2590-2006 (EN 10060:2003, NEQ; GOST 2590-2006, IDT)	St3ps/sp	DSTU 2651:2005 / GOST 380-2005	DSTU 4484:2005 / GOST 535-2005	
30	6000 - 12000					
40	6000 - 12000					
40	4000 - 8000					
60	3000 - 12000					
70	3000 - 12000					
75	3000 - 12000					
80	3000 - 12000					
100	3000 - 12000					
120	3000 - 12000					
130	3000 - 12000					
140	3000 - 12000					
150	3000 - 12000					
160	3000 - 12000					
170	3000 - 12000					
180	3000 - 12000					
190	3000 - 12000					
200	3000 - 12000					
210	3000 - 12000					
220	3000 - 12000					
230	3000 - 12000					
240	3000 - 12000					
250	3000 - 12000					
260	3000 - 12000					
270	3000 - 12000					
280	3000 - 12000					
290	3000 - 11300					
300	3000 - 10500					
				20, 35, 45	DSTU 7809:20115, GOST 1050-2013	DSTU 7809:20115, GOST 1050-2013
				09G2S	DSTU 8541:2015	DSTU 8541:2015
			40H	DSTU 7806:2015, GOST 4543-2016	DSTU 7806:2015, GOST 4543-2016	



## ROUND BAR

Size, mm		Standard for dimensions and shape	Steel grades	Standard for steel grade	Standard for technical requirements	
Diameter	Length					
25	6000 - 12000	TU U 24.1-31632138-1417:2019	St3ps/sp	DSTU 2651:2005 / GOST 380-2005		
30	6000 - 12000					
40	6000 - 12000					
40	4000 - 8000					
60	3000 - 12000					
70	3000 - 12000					
75	3000 - 12000					
80	3000 - 12000					
100	3000 - 12000					
120	3000 - 12000					
130	3000 - 12000					
140	3000 - 12000					
150	3000 - 12000					
160	3000 - 12000					
170	3000 - 12000					
180	3000 - 12000					
190	3000 - 12000					
200	3000 - 12000					
210	3000 - 12000					
220	3000 - 12000					
230	3000 - 12000					
240	3000 - 12000					
250	3000 - 12000					
260	3000 - 12000					
270	3000 - 12000					
280	3000 - 12000					
290	3000 - 11300					
300	3000 - 10500					
				20, 35, 45	DSTU 7809:20115, GOST 1050-2013	
				09G2S	DSTU 8541:2015	TU U 24.1-31632138-1417:2019
			40H	DSTU 7806:2015, GOST 4543-2016		
			S235, S275, S355 (JR, J0, J2)	EN 10025-2:2019		
			LF2	ASTM A350/A350M -15		
			C45, C45R	EN 10083-2:2006		

Dimensions, steel grade and technical requirements should be agreed during the conclusion of contract. By agreement it is possible to manufacture products of other sizes and steel grades.



## ROUND FOR GRINDING BALLS PRODUCTION

Size, mm		Standard for dimensions and shape	Steel grades	Standard for steel grade	Standard for technical requirements
Diameter	Length				
30	4000 - 5900	TT 230-33-2018	Sh2, M-4, 70, SAE 1070	TT 230-33-2018	TT 230-33-2018;
40	4000 - 5900				
40	4000 - 5900				
60	4000 - 5900				
80	4000 - 5900	TT 230-34-2017	Sh2, M-4, 75Г2С	TT 230-34-2017	TT 230-34-2017
100	4000 - 5900				
120	4000 - 5900				

Dimensions, steel grade and technical requirements should be agreed during the conclusion of contract. By agreement it is possible to manufacture products of other sizes and steel grades.

## GRINDING BALLS

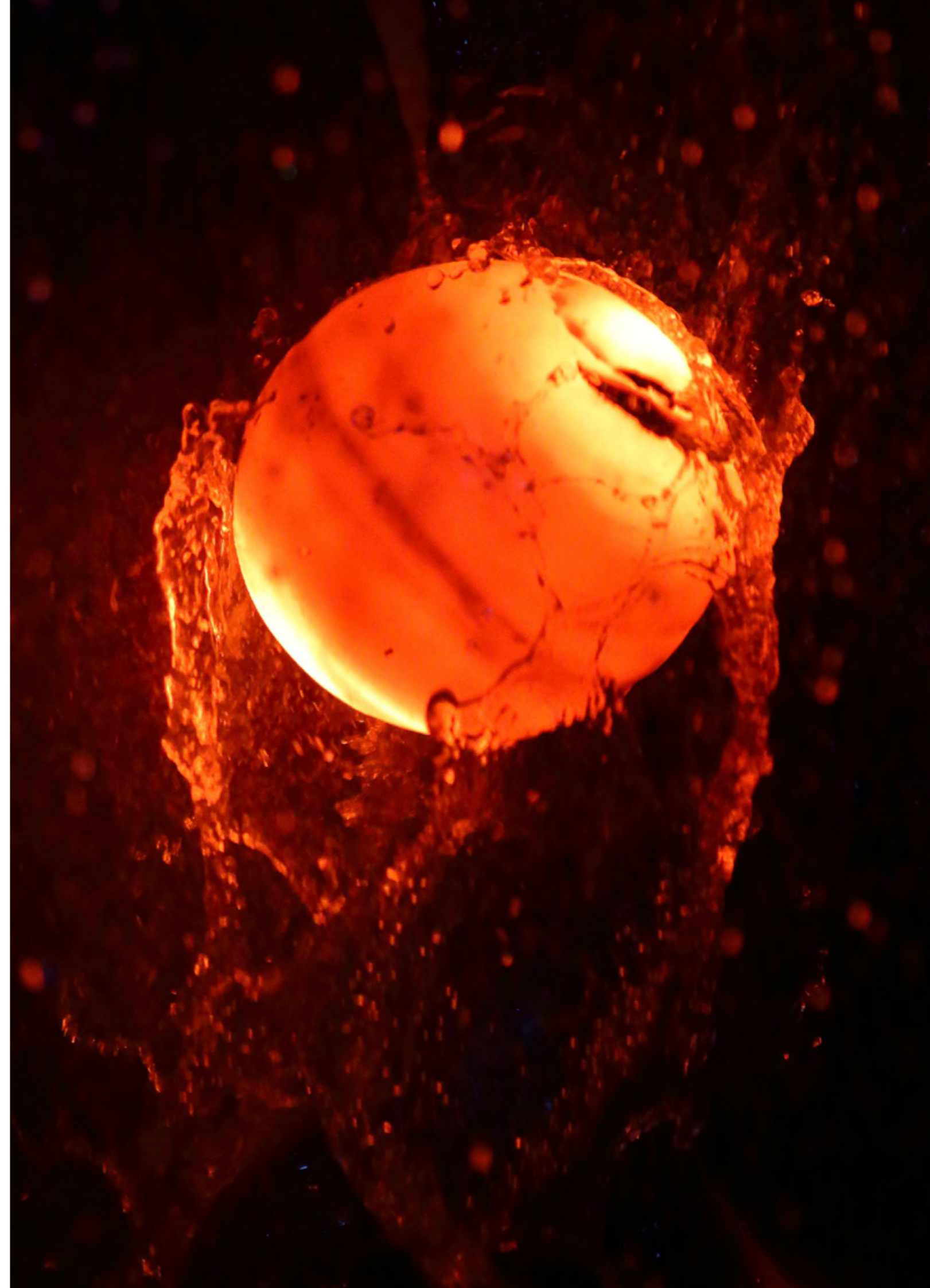
Nominal diameter, mm	Weight of 1 ball, kg (for nominal diameter)	Standard for dimensions and shape	Hardness group							Standard for technical requirements
			1	2	3	4		5		
			Hardness HRC, not less							
			Surface		Surface	½ radius	Surface	Volume		
30	0,128	DSTU 8538:2015	45	49	55	55	45	61	57	DSTU 8538:2015
40	0,294		45	49	55	55	45	61	57	
50	0,580		43	48	53	53	43	—	—	
60	0,980		43	48	53	53	43			
80	2,350		39	42	52	—	—			

Dimensions, steel grade and technical requirements should be agreed during the conclusion of contract.

## GRINDING ROD

Size, mm		Standard for dimensions and shape	Steel grades	Standard for steel grade	Standard for technical requirements
Diameter	Length				
100	5400	TU U 24.1-31632138-1417:2019	70G	DSTU 8429:2015	TU U 24.1-31632138-1417:2019

Dimensions, steel grade and technical requirements should be agreed during the conclusion of contract.



# CONTACTS

## WESTERN EUROPE

### SWITZERLAND

Metinvest International SA  
Rue Vallin 2  
1201 Geneva, Switzerland  
+41 22 906 18 28  
[switzerland@metinvest-international.com](mailto:switzerland@metinvest-international.com)

### ITALY

Metinvest Trametal  
Via XII Ottobre 1  
16121 Genova, Italy  
+39 010 576 29 11  
[sales@metinvest-westerneurope.com](mailto:sales@metinvest-westerneurope.com)  
Metinvest International Italia | Ferriera Valsider  
Via Antonio Salieri 36  
37050 Oppeano (VR), Italy  
+39 045 713 33 11  
[sales@metinvest-westerneurope.com](mailto:sales@metinvest-westerneurope.com)

### GERMANY

Trametal Deutschland  
Carl-von-Linde 40  
85716 Unterschleissheim, Germany  
+49 0 89 309 079 0  
[sales@metinvest-westerneurope.com](mailto:sales@metinvest-westerneurope.com)  
Huttopstrasse 60  
45138 Essen, Germany  
+49 0 201 177 89 70  
[sales@metinvest-westerneurope.com](mailto:sales@metinvest-westerneurope.com)

### BELGIUM

Trametal Europe  
Ilgatlaan 9  
3500 Hasselt, Belgium  
+32 0 11 93 33 29  
[sales@metinvest-westerneurope.com](mailto:sales@metinvest-westerneurope.com)

### IBERIAN PENINSULA

Metinvest Iberica  
Rodriguez Arias 6, 2º, Off.202  
48008 Bilbao, Spain  
+34 94 640 00 41  
[sales@metinvest-westerneurope.com](mailto:sales@metinvest-westerneurope.com)

### THE UNITED KINGDOM

Spartan UK  
Ropery Rd  
NE8 2RD Gateshead, United Kingdom  
+44 0 191 460 42 45  
[sales@metinvest-westerneurope.com](mailto:sales@metinvest-westerneurope.com)

## EASTERN EUROPE

### BULGARIA

Promet Steel  
Administrative Bldg  
8314 Debelt, Bulgaria  
+359 5 680 10 42  
[office.pms@promet.bg](mailto:office.pms@promet.bg)  
Dobrudzha 1  
1000 Sofia, Bulgaria  
+359 884 550 816  
[veselin.sokolov@promet.bg](mailto:veselin.sokolov@promet.bg)

### POLAND

Metinvest Polska  
Warszawska 33  
40-010 Katowice, Poland  
+48 032 888 58 41  
[vladimir.zadolinnyy@metinvestholding.com](mailto:vladimir.zadolinnyy@metinvestholding.com)

### ROMANIA

Metinvest Carpathia  
Turturelelor 11A, Sector 3, Fl.2  
Phoenicia Business Center  
030881 Bucharest, Romania  
+40 314 378 372  
[romania@metinvest-international.com](mailto:romania@metinvest-international.com)

### UKRAINE

Metinvest-SMC  
Moskovska 8, Fl.3  
02000 Kyiv, Ukraine  
+38 044 581 44 98  
[smc@metinvestholding.com](mailto:smc@metinvestholding.com)

## MENA

### TURKEY

Metinvest International  
Sedef Cd.2, A Blok, Off.4  
Atasehir Residence  
34758 Istanbul, Turkey  
+90 216 456 56 80  
[aydin.turker@metinvest-international.com](mailto:aydin.turker@metinvest-international.com)

### THE GULF

Metinvest International  
LOB B, Fl.11, Jebel Ali Free Zone  
263027 Dubai, United Arab Emirates  
+971 4 881 19 40  
[viktor.vukusic@metinvest-international.com](mailto:viktor.vukusic@metinvest-international.com)

### LEBANON

Metinvest International  
Montelibano Bld, Fl.10  
New Jdeideh, Sagesse  
1103 Beirut, Lebanon  
+961 1 90 08 72  
[vladimir.shakhovoy@metinvest-international.com](mailto:vladimir.shakhovoy@metinvest-international.com)

### NORTH AFRICA

Metinvest International  
Rue du Lac Constance  
Les Berges du Lac, Tunis  
1053, Tunisia  
+216 26 156 900  
16/1 7th district, Bl.15035  
11865 Cairo, Egypt  
+201 10 00 70 700  
[ghazi.maherzi@metinvest-international.com](mailto:ghazi.maherzi@metinvest-international.com)

## SOUTHEAST ASIA

### CHINA

Metinvest International  
Wanda Plaza, Bld 5, Off.602  
Jianguo Road 93  
100022 Beijing, China  
+86 10 5820 8124  
[vivian.zhou@metinvest-international.com](mailto:vivian.zhou@metinvest-international.com)

### SINGAPORE

Metinvest Singapore  
Battery Road 4, #25-01  
049908 Singapore, Republic of Singapore  
+65 9005 9307  
[renat.salimov@metinvest-international.com](mailto:renat.salimov@metinvest-international.com)

## AMERICAS

### LATIN AMERICA

Metinvest International  
Condominio Avenida Anacaona II  
Ave Anacaona Comercial C2  
10108 Santo Domingo, Dominican Republic  
+1 809 482 74 56  
[sasha.vukusic@metinvest-international.com](mailto:sasha.vukusic@metinvest-international.com)

